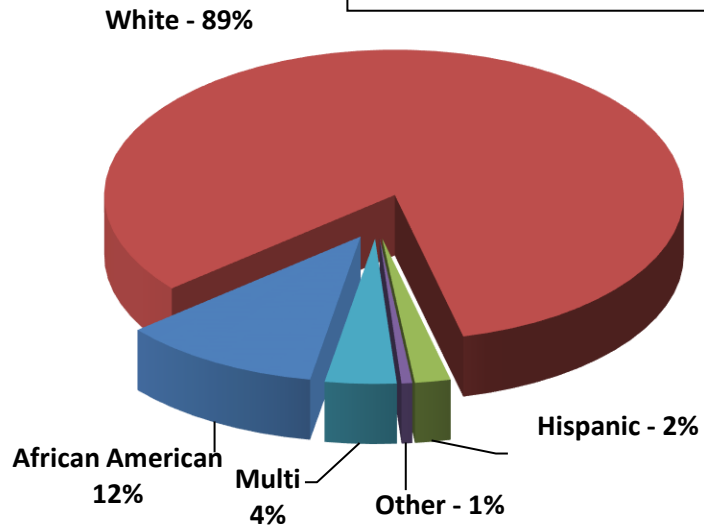
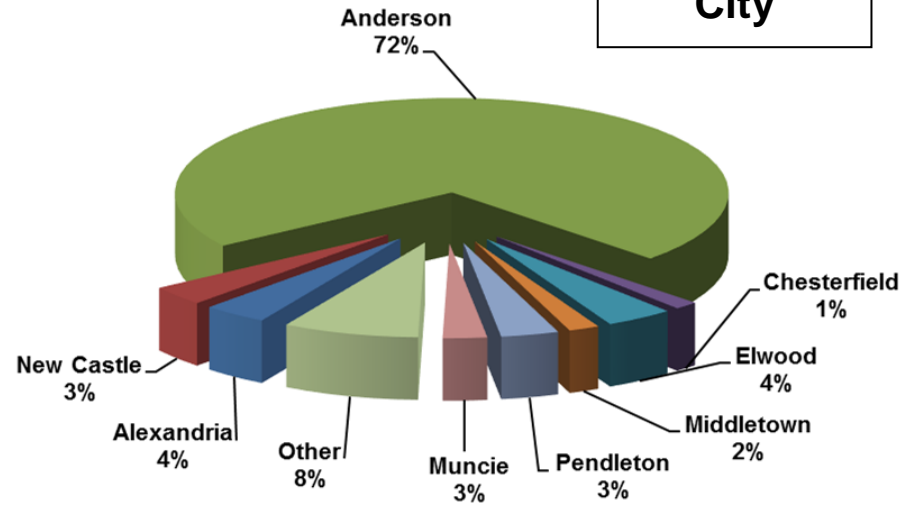


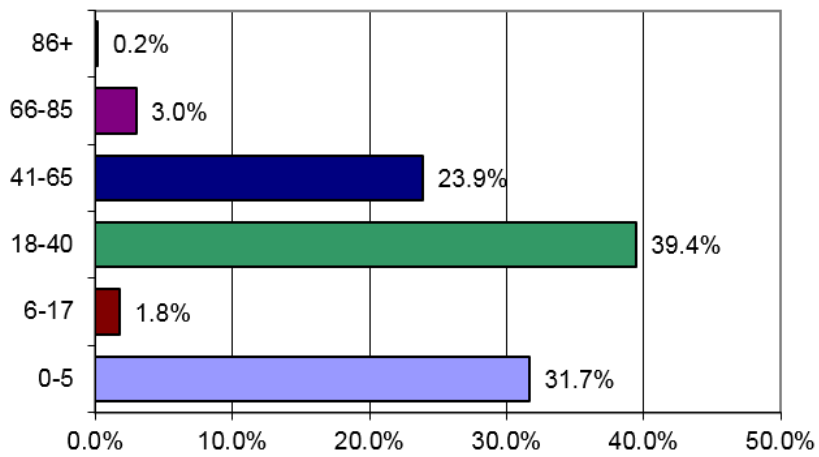
### Diversity



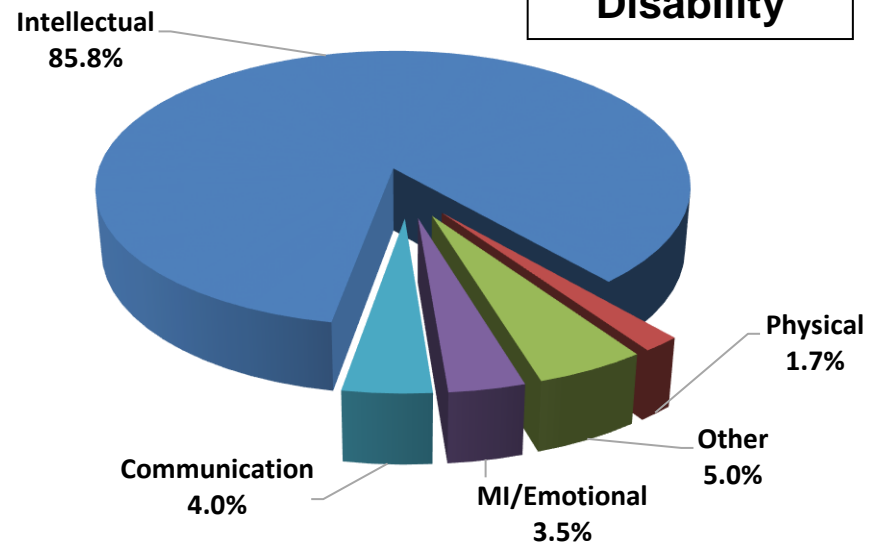
### City



### Age Distribution



### Disability

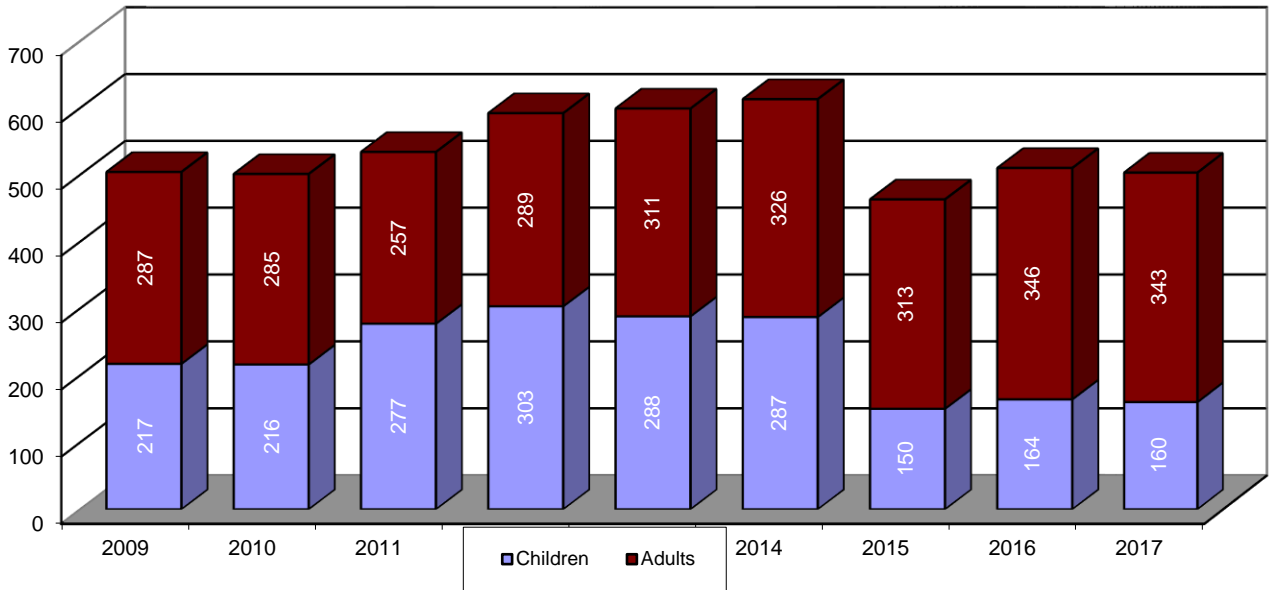


## **Program Evaluation Highlights**

1. Served 48 more individuals than same period last year. (Started tracking Music Therapy)
2. First Steps served 39 more children than same period last year.
3. Supported Employment served 22 more people than same period last year. Order of Selection having minimal impact so far.
4. Day Services served 4 more people than same period last year.
5. Pre-ETS program has been asked by VR to expand the number of schools it supports.
6. There were 85 new referrals to Early Intervention – 18 related to opioid epidemic.
7. Music Therapy served 38 persons during this period. 24 of these individuals made “unexpected” gains in other areas of daily living during their therapy (communication, emotional stability, handwriting, dexterity, community involvement, and tolerating loud noises).
8. Referrals for BINS are at 22 for this period. This compares to 21 for the entire year of 2017.
9. Seven individuals were placed in jobs this period. Starting average pay for individuals is \$9.00/hr up \$1.07 over last year.
10. Red Gold job working well at 1 semi-truck load a day. WIOA restrictions on sub-minimum wage work participation create a problem to having available workforce.
11. 50% of Day Services participants utilized 58 community sites during the 6 month training period.
12. Workshop participants worked a total of 14,633 hours earning \$64,693 averaging \$4.42/hr.
13. Employment Services has seen no negative consequences of VR’s Order of Selection.

# Program Evaluation Summary – FY2017

## Total Persons Served



## Program Participation

